



AQUA-E®



suitable for vegetarians

The Company

Yasoo Health Inc is one of the world's leading companies in vitamin E research and formulation with headquarters in Johnson City, Tennessee. The company develops and markets proprietary and non-proprietary products based on nutrients and natural compounds aimed at the management of chronic disease and the promotion of wellness. Its proprietary products focus on helping patients effectively manage major chronic diseases, reduce the risk of complications and improve quality of life.

Yasoo Health products contain pharmaceutical grade ingredients and are formulated to maximize bioavailability and to ensure the required amounts of nutrients and other natural compounds reach the bloodstream.

Yasoo Health brings together the best of medical and clinical science, nutrition, formulation and process technology. Science, quality and service are the cornerstones of the company.



The science of good health

*These statements have not been evaluated by the Food and Drug Administration. This product is not intended to diagnose, treat, cure, or prevent any disease.

AQUA-E®

Absorb Life

with

Water - Soluble Vitamin E



ARTBOX COMMUNICATIONS

The Problem

Humans are water-based organisms. Vitamin E is a fat-soluble vitamin, and therefore not soluble in water since oil and water do not mix. Like other fats in our diet, vitamin E can only be absorbed after it is incorporated into micelles through the actions of the body's bile and pancreatic secretions. These micelles are spherical particles that have a hydrophilic (water-loving) exterior that encapsulates the lipid interior for absorption (see diagram below). Any condition that diminishes the function of the pancreas, the liver, or the digestive system, can cause malabsorption. Unfortunately, vitamin E deficiency may go undetected for decades and the cumulative damage may be debilitating and irreversible.

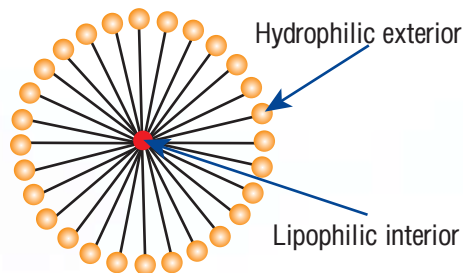
The Solution

Aqua-E[®] is the first dietary supplement that supplies the complete vitamin E family of tocopherols plus tocotrienols in a micellar, water-soluble format that is ready for absorption.

Aqua-E[®] forms micelles which enable absorption of lipophilic vitamin E in the body, even when the liver, pancreas and the digestive system do not function normally.

Aqua-E[®] is formulated with TPGS (d-alpha-tocopheryl polyethylene glycol 1000 succinate) to maximize absorption.

Aqua-E[®] forms micelles



Aqua-E[®] is odorless and has a neutral taste. It mixes easily with most beverages and water. Dosing can be adjusted to meet the needs of children and those with special needs. Please consult your health care provider concerning dosing recommendations.

Aqua-E[®] is casein free & gluten free (CF/GF), and is free of animal products, yeast, wheat, added colors or flavors, sweeteners and salt. It is suitable for vegetarians.

Aqua-E[®] is produced under cGMP, the highest standard of manufacturing quality.

About Vitamin E

Vitamin E is an essential nutrient and a master antioxidant. It protects the membranes of our cells and neutralizes free radicals that cause oxidative damage in the body. Vitamin E supports a healthy immune function, normal cardiovascular and circulatory function, and normal neurological function.

Malabsorption of vitamin E can cause:

- Neurological complications
- Musculoskeletal weakness
- Immune system impairment
- Reduced fertility
- Increased oxidative stress which is associated with higher risk of chronic disease.



Who should take Aqua-E[®]*

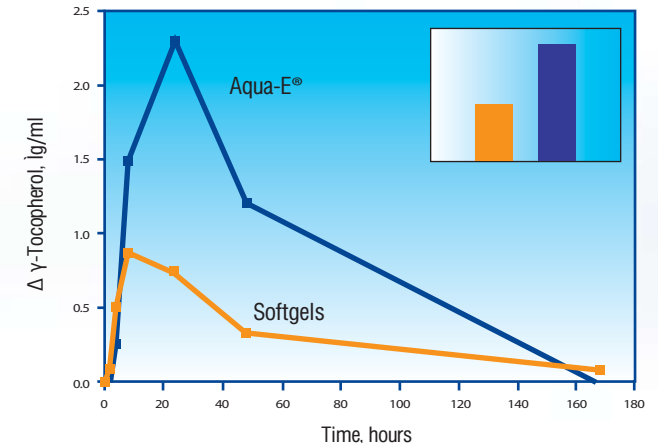
Many medical conditions can cause malabsorption of fat-soluble vitamins and nutrients. Aqua-E[®] may aid in enhancing absorption of vitamin E in:

- Liver and pancreatic insufficiency
 - Cholestasis
 - Cystic fibrosis
 - Chronic pancreatitis
 - Other liver diseases (including hepatitis)
- Gastrointestinal diseases
 - Inflammatory bowel disease
 - Short bowel syndrome
 - Infectious diseases of the gut (HIV/AIDS and others)
 - Irritable bowel syndrome
 - Bariatric surgery
 - Celiac disease
- Defects in the transport of vitamin E
 - Abetalipoproteinemia
 - Ataxia with vitamin E deficiency, or familial isolated vitamin E deficiency
 - Friedreich ataxia

Aqua-E[®] is also a convenient vitamin E supplement for conditions which may not be directly related to malabsorption. These may include people who have difficulty swallowing softgels due to their age or disease conditions and also conditions that may cause diarrhea and/or loss of appetite.

Supporting Data

Data from a clinical study with cystic fibrosis patients presented at the 2005 North American Society for Pediatric Gastroenterology, Hepatology and Nutrition show that Aqua-E[®] produced a marked and statistically significant increase in the absorption of the gamma-tocopherol form of vitamin E in malabsorbing cystic fibrosis patients as compared to an oil-based softgel formulation. Aqua-E[®] produces an increase in blood levels (AUC-area under the curve) of the tocopherols that ranged from 2 to 4 times higher than an equal amount of the oil-based vitamin E.



Aqua-E[®] Supplement Facts

Aqua-E[®] contains 20 IU alpha-tocopherol per ml (Note that IU's refer only to alpha-tocopherol, they do not include the other tocopherols and tocotrienols)

100 IU = 5 ml = 1 teaspoon Aqua-E[®]
 200 IU = 10 ml = 2 teaspoons Aqua-E[®]
 400 IU = 20 ml = 4 teaspoons Aqua-E[®]

Supplement Facts	%Daily Value	Amount per 1.0 ml
IU from d-alpha-Tocopherol	100%	20
d-gamma-Tocopherol, mg	*	12
d-beta plus d-delta-Tocopherol, mg	*	4
Total tocopherols, mg	*	30
Total tocotrienols, mg	*	2
Total tocopherols Plus tocotrienols, mg	*	32

Directions for Use: Aqua-E[®] can be taken directly or mixed with your favorite beverage. Aqua-E[®] may be taken at any time in a single dose or as directed by your healthcare provider. Refrigerate after opening and shake well before each use. Please consult your healthcare provider concerning dosing recommendations.